

TOSB - TAYSAD ORGANİZE SANAYİ BÖLGESİ

1. Cadde No:19 41420 Çayırova-Kocaeli/TÜRKİYE

Phone: +90 (262) 658 30 01

Fax: +90 (262) 658 30 05

info@gursetas.com

www.gursetas.com



GÜRSETAŞ
DÖKÜM SAN. VE TİC. LTD. ŞTİ.



www.gursetas.com



www.gursetas.com

GÜRSETAŞ CASTING INDUSTRY

Gürsetaş Casting is established in 1990.
Gürsetaş Castings, continue to produce in 6000m² closed area
located in TAYSAD Industrial Zone (TOSB), KOCAELİ/TURKEY.
Production Capacity: up to 3.000 tons/year

- 40% percent of the production consists of export to USA and Germany
- Per part casting capacity is 6 tons.



Gürsetaş has the ability to provide the following casting and services in with modern production facility:

- ✓ Carbon Steel Castings
- ✓ Low and High Alloy Steel Castings
- ✓ Stainless Steel Castings
- ✓ Manganese Steel Castings
- ✓ Grey Iron Castings and Spheroidal Iron Castings
- ✓ Ni-Hard, Cr-Hard
- ✓ Heat Treatment Applications(Air, Water and Oil Quenching and Tempering - Per Part Capacity is 7 tons)



CASTING

QUALITY POLICY

Our quality policy is to meet the demands and expectations of our national and international customers in the best way, to continuously improve our quality system and to ensure its continuity with our products in line with international quality standards as well as laws and regulations.

 **ABS ClassNK**



MANUFACTURING CAPACITY

INDUCTION FURNACE CAPACITIES

- 5.000 kg
- 2.500 kg
- 600 kg

MOULDING

- Sand Mixer Capacity: 20 tons/hour (Big)
- Sand Mixer Capacity: 10 tons/hour (Small)

FLASKS DIMENSION and PER PART CASTING CAPACITY

- Max. flask : 3000mm x 5000mm / 3700mm x 3700mm
- Min. flask : 700mm x 1000mm
- Max. weight : 6.000 kg
- Min. weight : 50 kg

HEAT TREATMENT FURNACES DIMENSIONS

- Normalizing Furnace : 1,75m x 3m x 4,5m
- Electrical Furnace : 2m x 2m x 2m
- Natural Gas Tempering Furnace : 1.6m x 2m x 2,5m

LABORATORY

- Optical Microscope (Clemex)
- Tensile Strength Test, Charpy Impact Test, Hardness Test
- Spectrometer

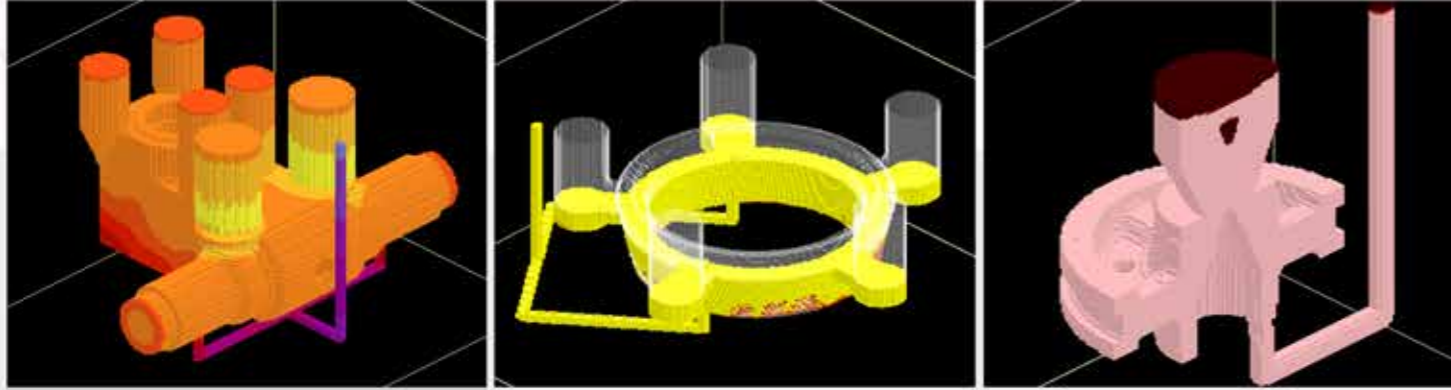
PATTERNSHOP

- Wooden Pattern Manufacturing
- Styrofoam Pattern Manufacturing

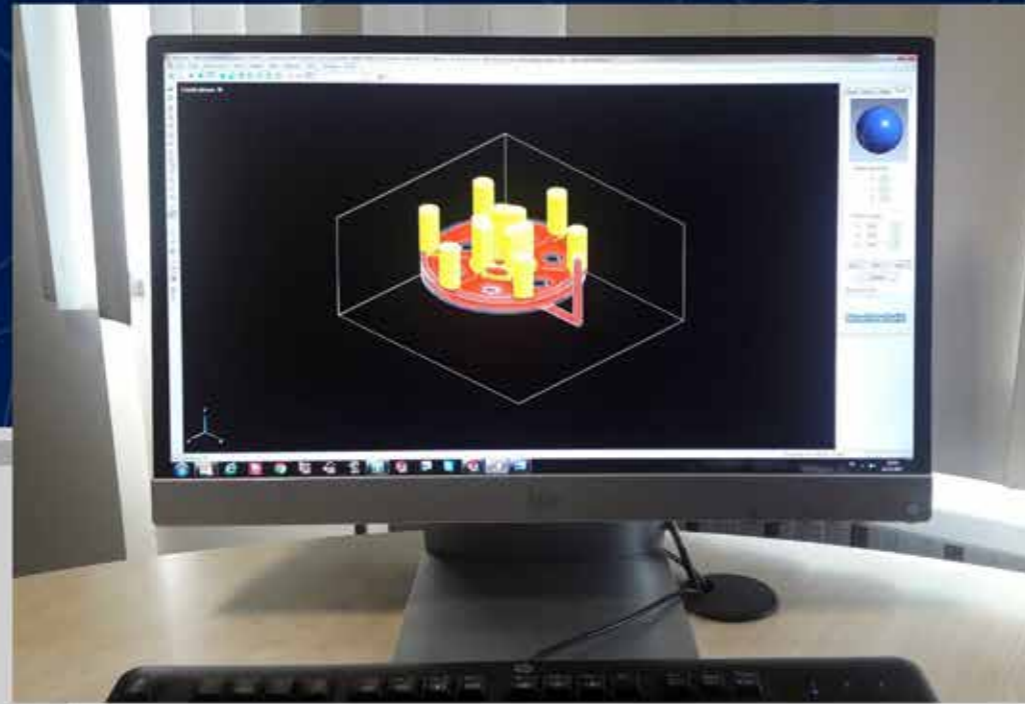
MACHINING FACILITY

- Ø1400 Vertical Lathe
- Ø1600 Vertical Lathe
- 2 Pcs CNC Horizontal Machining (MCH 500, MCH 800)

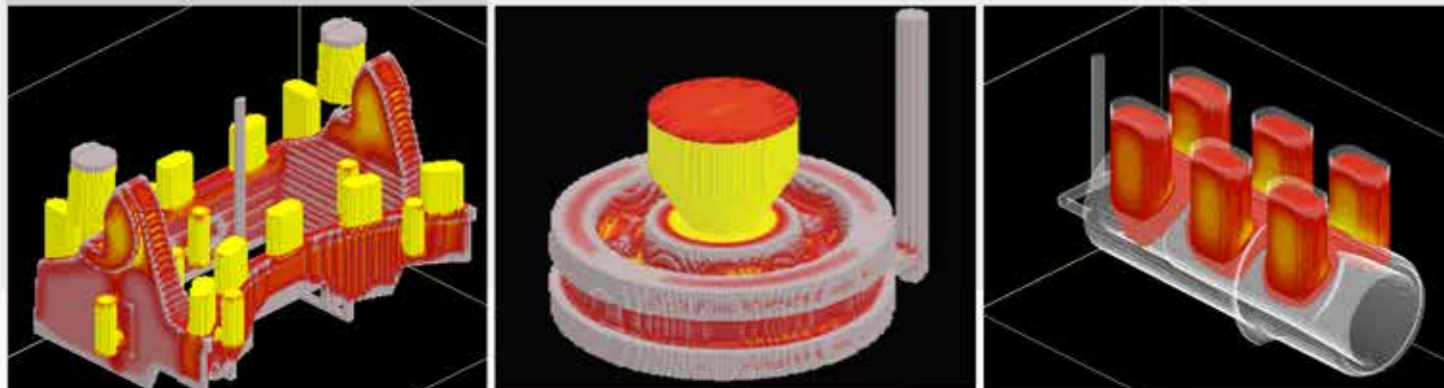




DESIGN



QUALITY ASSURANCE





HEAT TREATMENT

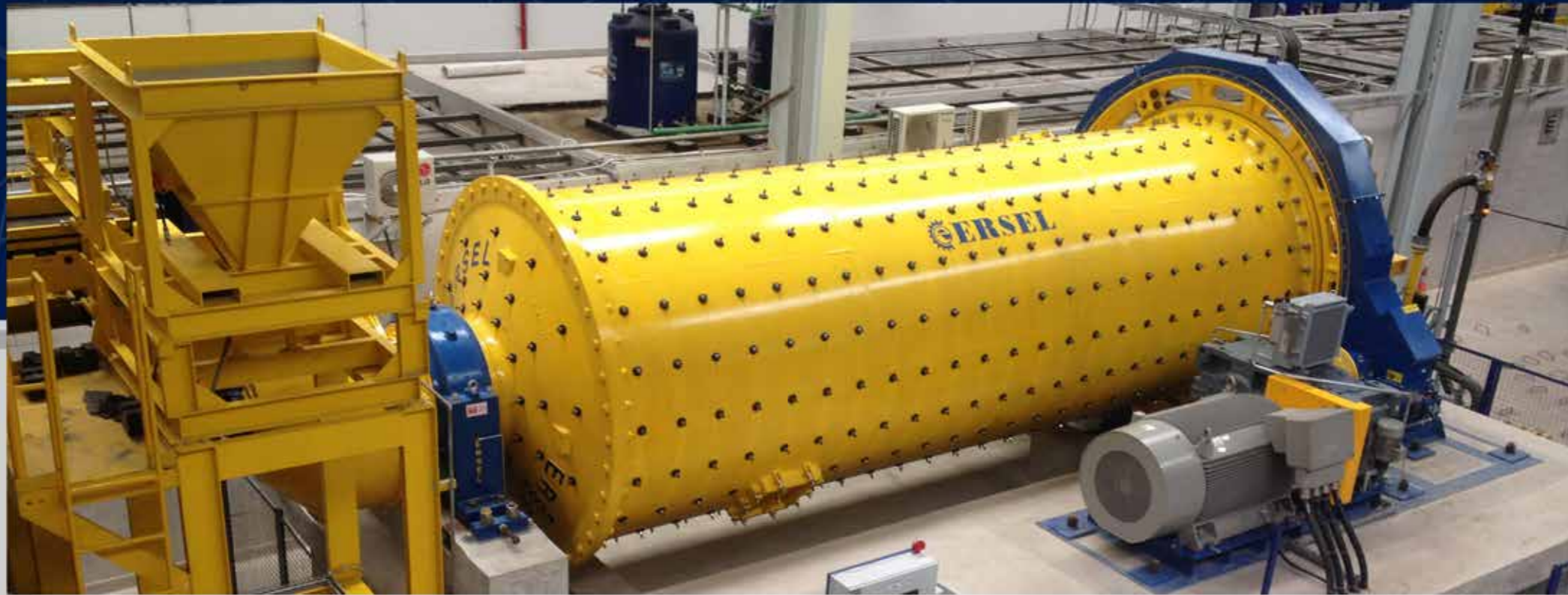


PATTERN SHOP and MOULDING LINE





**CEMENT
INDUSTRY**

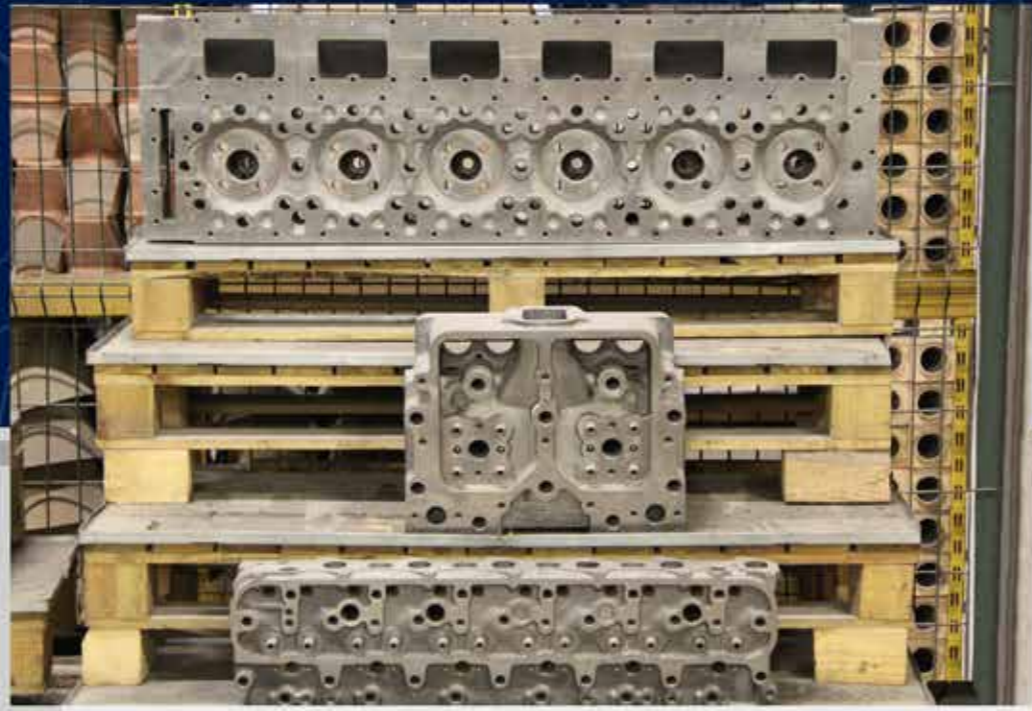


**MINING
INDUSTRY**





**AUTOMOTIVE
INDUSTRY**



**OFF-SHORE
and
SHIP INDUSTRY**





GENERAL MACHINERY PARTS



MACHINING CENTRE

